



Schenectady City School District

Hamlin Design Group

Shawn Hamlin, AIA

Turner Construction

Larry E. Tune

16th of December, 2015



CAPITAL PROJECT UPDATE | Outline

- Group A Projects Status Update:
Keane ES, Paige ES, SCLA - *Complete*
- Group B Projects Status Update:
Mont Pleasant Middle School
Oneida Middle School
Pleasant Valley Elementary - *Complete*
- Group C Projects Status Update:
Central Park Middle School
Howe Elementary
Van Corlaer Elementary
- Group D Projects Status Update:
Hometown Health Center @ MPMS
Hometown Health Center @ SHS
*CPMS – Exterior Masonry Repair Project



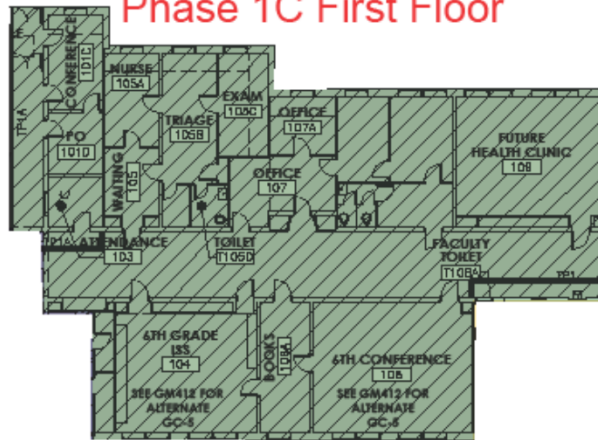
- Next Steps:
Critical & Milestone Dates



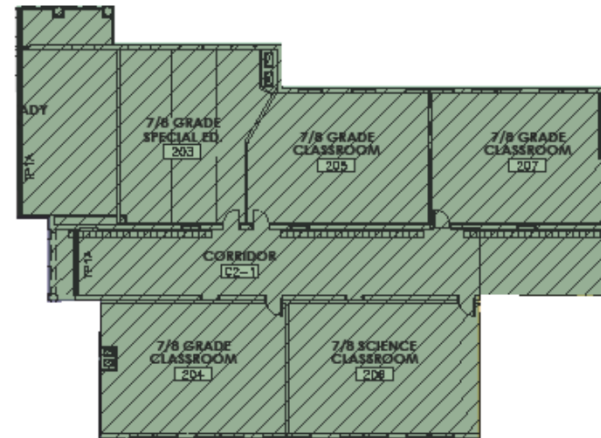
CAPITAL PROJECT | Group B

- MPMS – Phase 1C (All Floors)

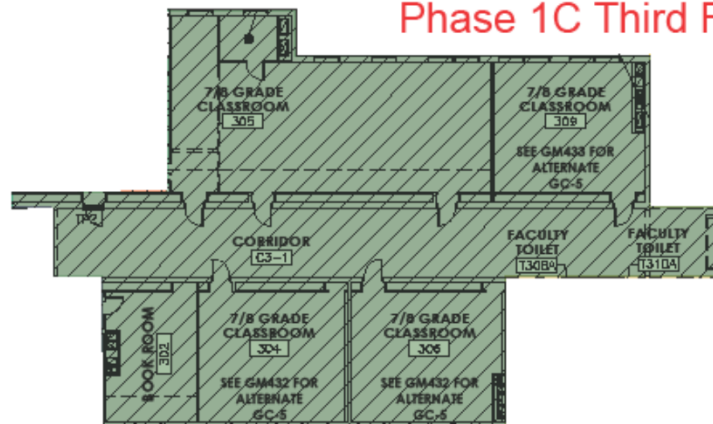
Phase 1C First Floor



Phase 1C Second Floor



Phase 1C Third Floor





PROGRESS UPDATE | MPMS

- MPMS – 1st Floor



Phase 1C – Typical Classroom Room Finish Progression



PROGRESS UPDATE | MPMS

- MPMS – 2nd Floor



Phase 1C – Typical Classroom/Science Room Finish Progression



PROGRESS UPDATE | MPMS

- MPMS – 2nd Floor (cont.)



Phase 1C – Typical Classroom/Science Room Finish Progression



PROGRESS UPDATE | MPMS

- MPMS – 2nd Floor (cont.)



Phase 1B – 6th Grade Wing Framing Installation



PROGRESS UPDATE | MPMS

- MPMS – 3rd Floor

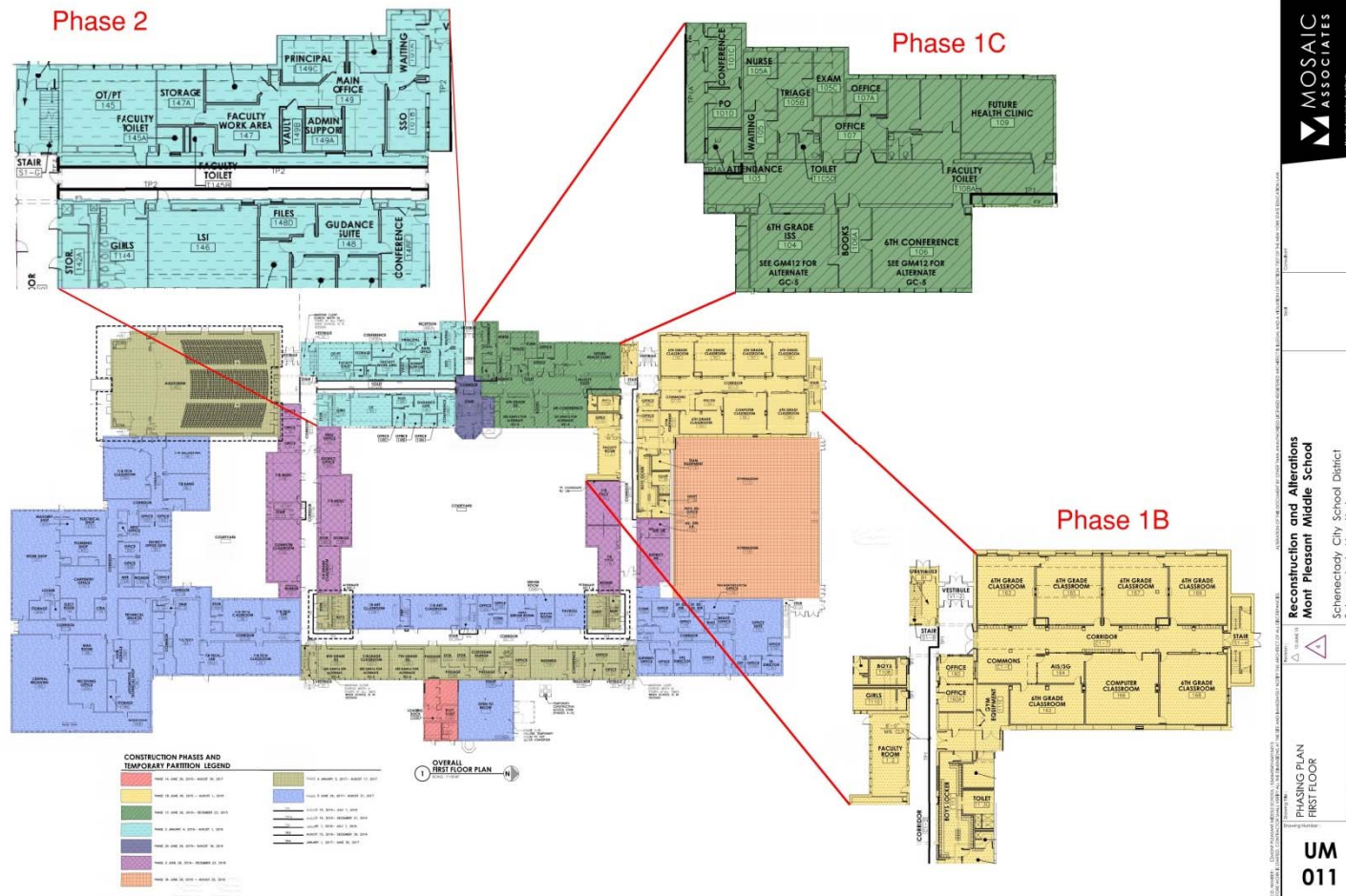


Phase 1C – Typical Classroom Room Finish Progression / Fin Tube Radiation & Ventilation Installation



CAPITAL PROJECT | Group B

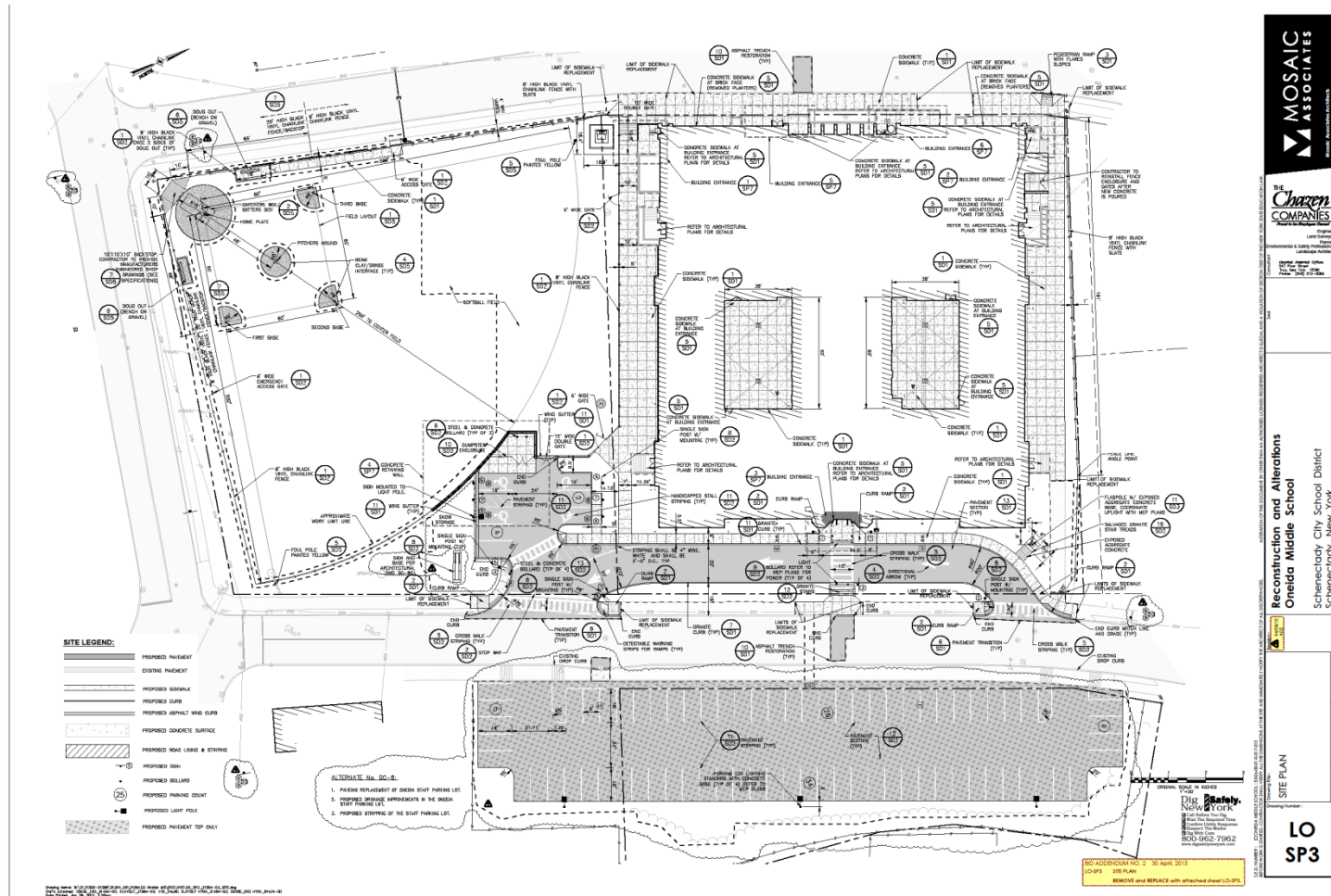
- MPMS – Phases 1B, 1C & 2





CAPITAL PROJECT | Group B

- OMS – Site Plan



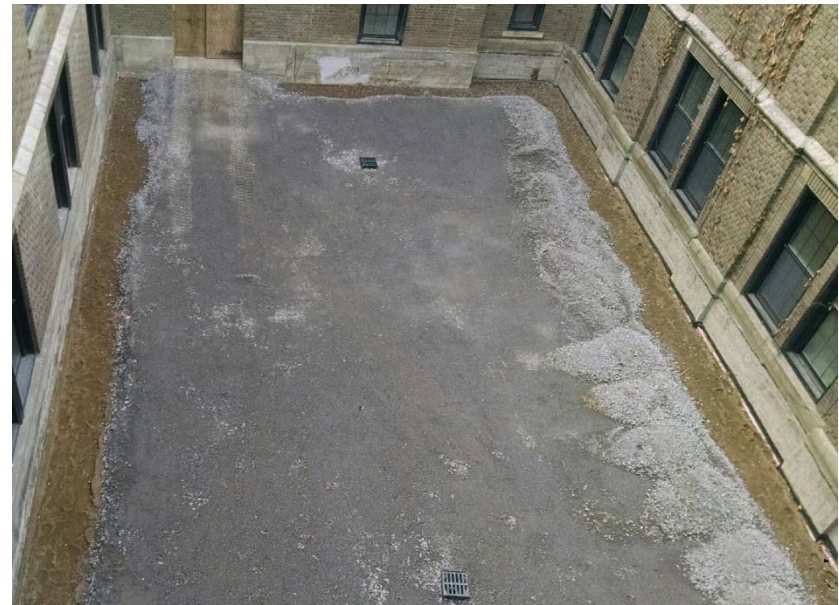


PROGRESS UPDATE | OMS

- OMS – Site



East Wall Exterior Waterproofing
and Storm Structure

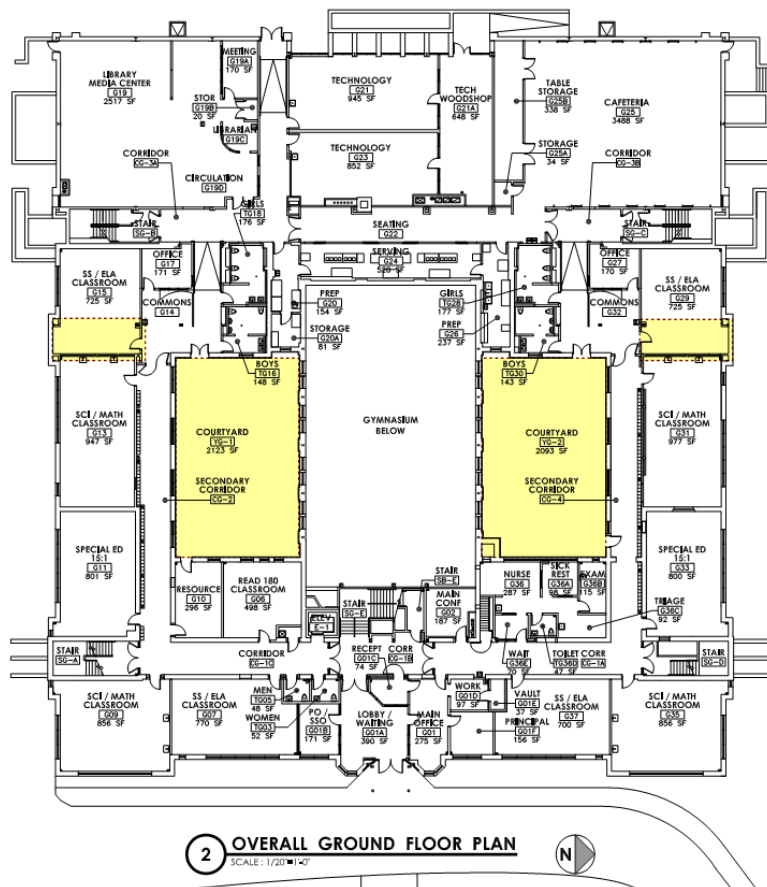


South Courtyard Complete to Sub-
Base



CAPITAL PROJECT | Group B

- OMS – Ground Floor Plan



Boiler Room & Coal Bin Infill's

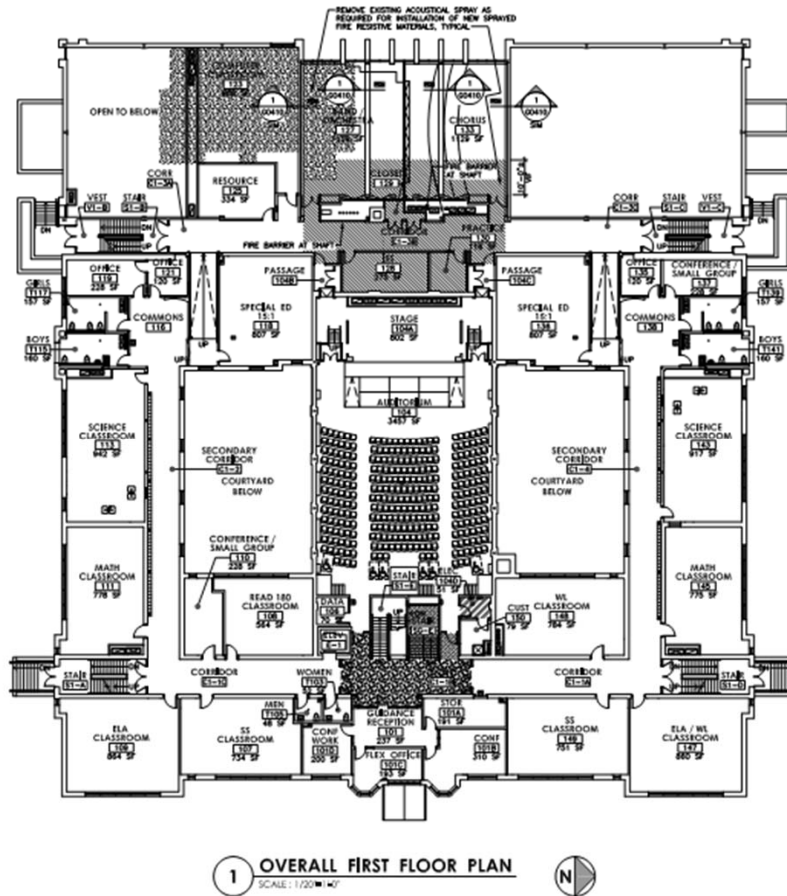


Footing Reinforcement for New Stair Infill's



CAPITAL PROJECT | Group B

- OMS – First Floor Plan

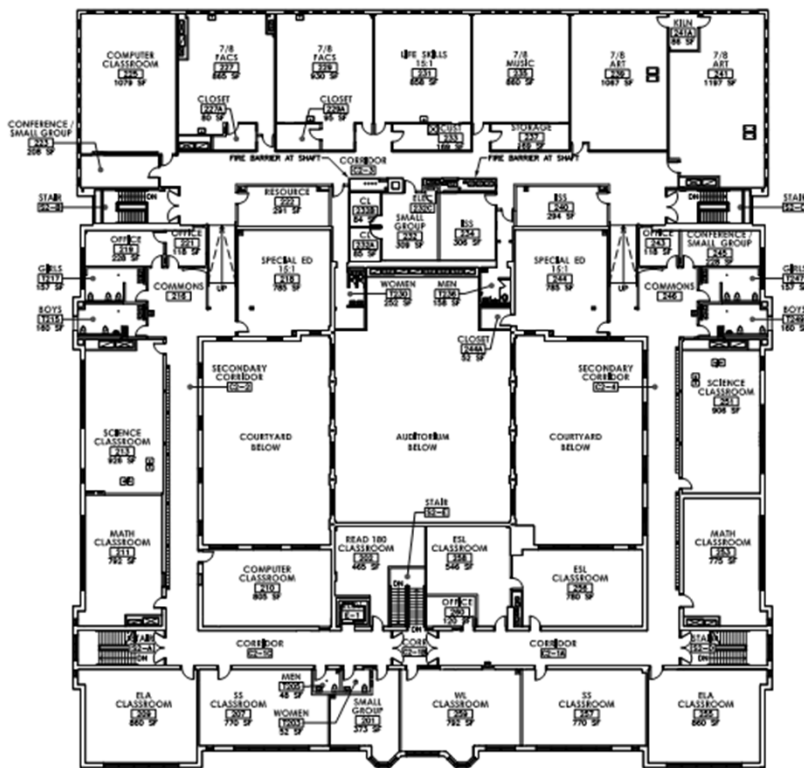


1st Floor Auditorium Scaffolding & Shoring for New Steel



CAPITAL PROJECT | Group B

- OMS – Second Floor Plan



2 OVERALL SECOND FLOOR PLAN
SCALE: 1/20" = 1'-0"



2nd Floor Framing & Rough In's



CAPITAL PROJECT | Group C

- CENTRAL PARK MIDDLE SCHOOL –
- Drawings & Specifications have been submitted to NYSED
 - Architectural review comments received.
 - Awaiting Engineering review.





CAPITAL PROJECT | Group C

- Van Corlaer ES drawings and specifications have been submitted to NYSED;
 - Awaiting Architectural and Engineering review.
- Howe ES DD drawings and specifications have been submitted to NYSED;
 - Awaiting Architectural and Engineering review.





CAPITAL PROJECT | Group D

- Hometown Health Centers
 - MPMS – Drawings with SED. Project has been bid, award pending SED approval.
 - SHS – Drawings with SED pending approval. Project has been bid and is currently in the contract review stage.



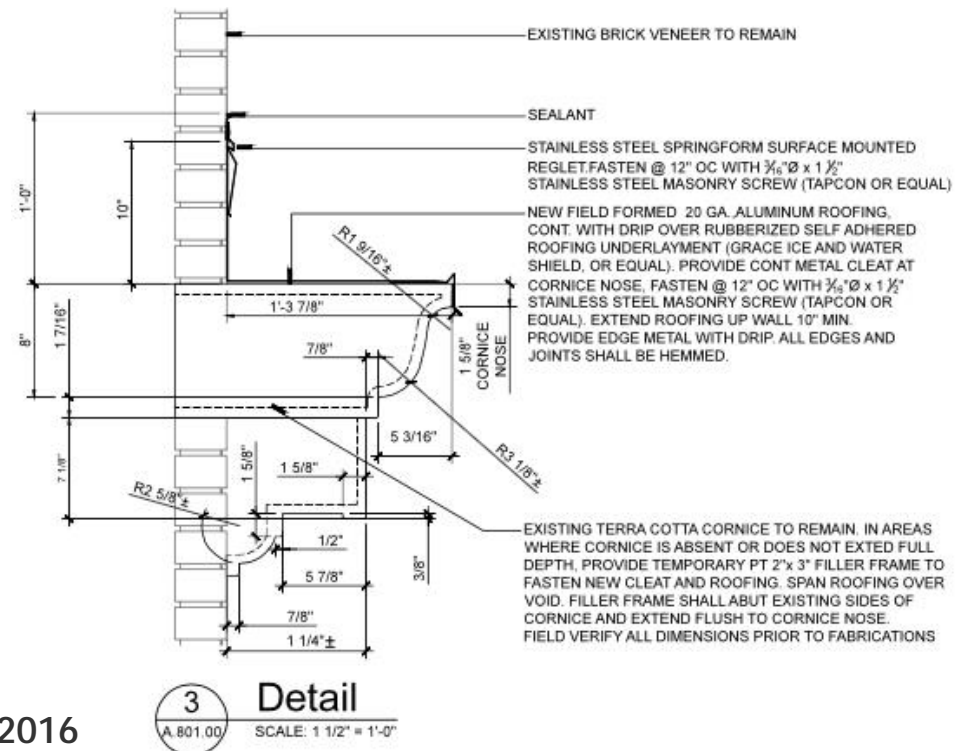


CAPITAL PROJECT | Group D

- CPMS – Exterior Masonry Repair
 - Structural Investigation
 - Failures Identified
 - Temporary Measures Installed
 - Temporary Protection / Permanent Solution



*Potential Bond Referendum – May 2016





CAPITAL PROJECT UPDATE | Next Steps & Milestones

- Dec 2015 / Jan 2016 MPMS Ph. 1c Substantial Completion;
MPMS move into Ph. 1c
Start Ph. 2 construction work.
- Spring 2016 Anticipate SED review comments
for CPMS, HOWE and VCES.
- May 2016 Anticipate bidding CPMS, HOWE
and VCES Projects.
Potential Bond Referendum for
CPMS Exterior Masonry
- September 2016 Reopen Oneida Middle School;
Open Mt Pleasant MS & Central
Park MS with 6th, 7th & 8th Grades.
- Summer 2017 Construct New bus drop off loop at MPMS.



THANK YOU | Any Questions?

